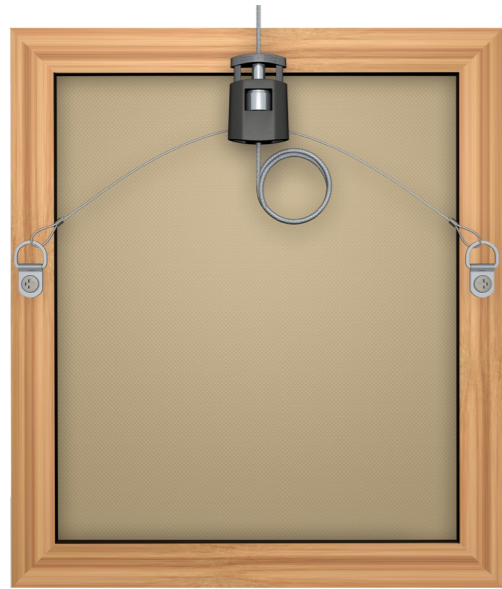


ACCESSORIES FOR FRAMES AND PANELS



D-RING HANGER

SCREW D-RING

HANGING SET
STEELWIRE + D-RING
HANGERS

ARTICLE NO.	805.249	9.4911	9.5522
-------------	---------	--------	--------



FRAME HANGER
1-1,5 mm STEELWIRE
(MAX. 10 kg)

FRAME HANGER
1,5-2 mm STEELWIRE
(MAX. 15 kg)

ARTICLE NO.	7805.055	7805.050
-------------	----------	----------

SPOOL



STEELWIRE
1 mm SPOOL

STEELWIRE
1,2 mm SPOOL

STEELWIRE
1,5 mm SPOOL

PERLON
2 mm SPOOL

ARTICLE NO. 100 m	9.4904	9.4955	9.4990	9.4404
ARTICLE NO. 500 m	-	-	-	9.4421S



PRESSING NIPPLE
1-1,2 mm

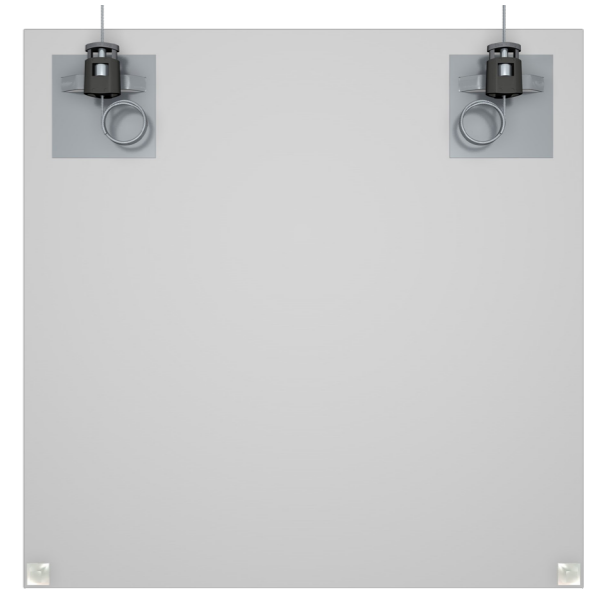
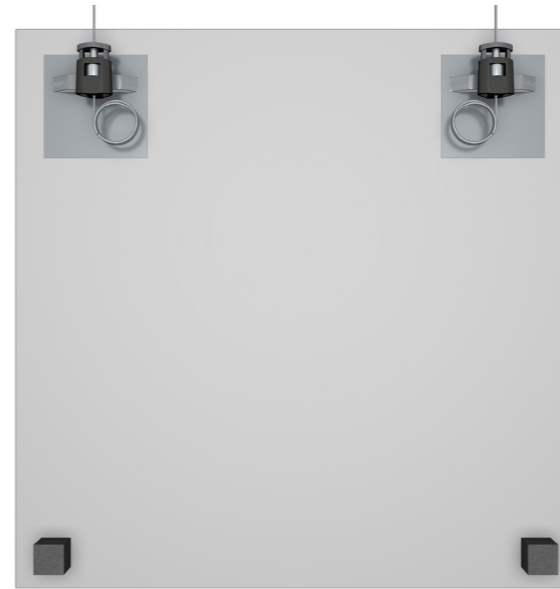
WIRE CLAMP
1,5 mm ALU

WIRE CLAMP
2 mm ALU

HANGING NIPPLE

ARTICLE NO.	9.4905	9.4430	9.4431	9.4211
-------------	--------	--------	--------	--------

ACCESSORIES FOR FRAMES AND PANELS



DIBOND HANGER

ARTICLE NO.	809.500	ROUND 42 mm (MAX. 0,5 KG)
ARTICLE NO.	809.510	50 X 52 mm (MAX. 1 KG)
ARTICLE NO.	809.520	70 X 70 mm (MAX. 2 KG)
ARTICLE NO.	809.530	100 X 100 mm (MAX. 4 KG)
ARTICLE NO.	809.540	100 X 200 mm (MAX. 8 KG)



SPACERS
TRANSPARENT, SELF-ADHESIVE

SPACERS
FOAM, SELF-ADHESIVE

ARTICLE NO.	809.001	12,5 x 12,5 x 5,7 mm	809.002	20 x 20 x 15 mm
-------------	---------	----------------------	---------	-----------------

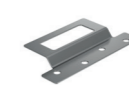
MISCELLANEOUS



TILE HANGER
32 mm (MAX. 200 gr)

PLATE HANGER
18-24 cm (MAX. 1 kg)

ARTICLE NO.	808.130	807.025
-------------	---------	---------



FRAME HANGER FOR
USE WITH WOOD

FRAME HANGER FOR
USE WITH ALUMINIUM

SET FRAME HANGERS
L&R

ARTICLE NO.	808.650	808.720	808.600
-------------	---------	---------	---------