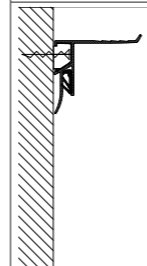
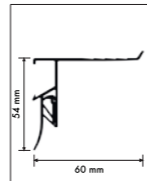


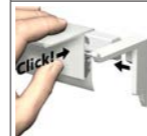
INFO RAIL+



> 80
< 2^G
MM

max.
5
KG/M

10
YEAR
WARRANTY



installation
video

Versatile presentation system on the wall

With Info Rail + you can create a versatile presentation system on the wall. Photos, drawings or recipes are easily clamped into the rail, as you may already be used to from our Info Rail. On top is a 6cm wide area where small photo frames, canvas paintings, greeting cards or other small crafts can be presented. An ideal, flexible and versatile presentation system where walls do not need to be damaged and the changing of drawings, posters or frames is quick and easy. Paper from 80 g up to cardboard with a thickness of 2mm are firmly clamped in the rail thanks to a double plastic clamping mechanism. The top surface of 6 cm has some subtle grooves to present a card or a list stably.

INFO RAIL +

05.57200

INFO RAIL + WHITE

200 cm

INCLUDES FASTENER MATERIAL AND END CAPS



05.47180

END CAP INFO RAIL + WHITE (L&R)

