

CLICK RAIL



30
KG/M

10
YEAR
WARRANTY

CLICK

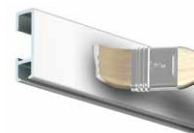
CONNECT

3 CLIPS / M

The Click Rail is a flexible picture hanging system that you mount to the wall. Using the Click&Connect system, mounting the rail system is fast and easy. The Click Rail may be installed flush against the ceiling and may also be repainted, for example in the same colour as the wall or ceiling. This helps the picture hanging system 'blend in' with the wall or ceiling, making it nearly invisible. The hanging rail's appearance makes it easy to integrate in any room or interior. You always have flexibility in hanging posters, pictures or photo frames thanks to the hanging wires with hooks that you can click into any desired location on the rail system.

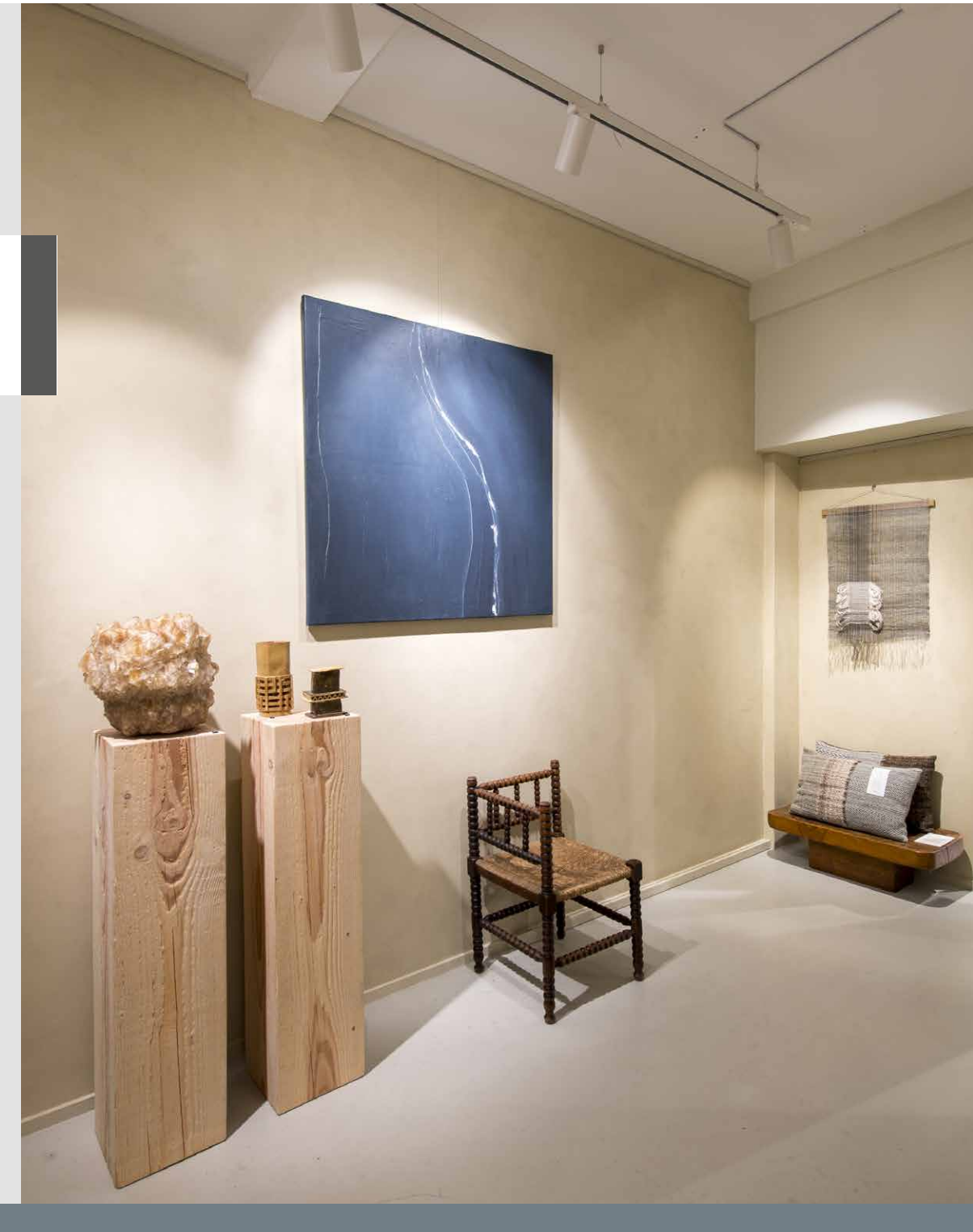
RAIL

NEW



	CLICK RAIL - WHITE RAL 9010		CLICK RAIL - WHITE PRIMER RAL 9016		CLICK RAIL - ALU BRUSHED		CLICK RAIL - BLACK STRUCTURE	
	P/1*	P/20*	P/1*	P/20*	P/1*	P/20*	P/1*	P/20*
ARTICLE NO. 150 cm				9.4360				
ARTICLE NO. 200 cm	9.4303	9.4353	9.4348	9.4350	9.4341	9.4340		05.01210
ARTICLE NO. 300 cm	9.4304	9.4354	9.4349	9.4351	9.4343	9.4342		05.01310
ARTICLE NO. 600 cm	9.4372		9.4346					
	FASTENER KIT WHITE		FASTENER KIT WHITE		FASTENER KIT GREY		FASTENER KIT BLACK	
ARTICLE NO. 200 cm	4065		4065		4064		5094	
ARTICLE NO. 300 cm	4061		4061		4060		5095	

FLEXIBLE
STRONG
RELIABLE



CONTENT FASTENER KIT



		QUANTITY 200 cm	QUANTITY 300 cm
9.4113	CLICK&CONNECT	6x	9x
9.4945	SCREW	6x	9x
9.4934	PLUG	6x	9x
9.4105 (WHITE) / 9.4104 (GREY) / 9.4112 (BLACK)	END CAP	2x	2x
9.4107 (WHITE) / 9.4108 (GREY) / 9.4114 (BLACK)	CORNER CONNECTOR	1x	1x
2386	INSTRUCTION	1x	1x

ALL MOUNTING MATERIAL MAY BE ORDERED SEPARATELY. SEE OVERVIEW ON PAGE 40
* P/1: PACKAGED BY THE PIECE IN FOIL / P/20: PACKAGED PER 20 IN FOIL