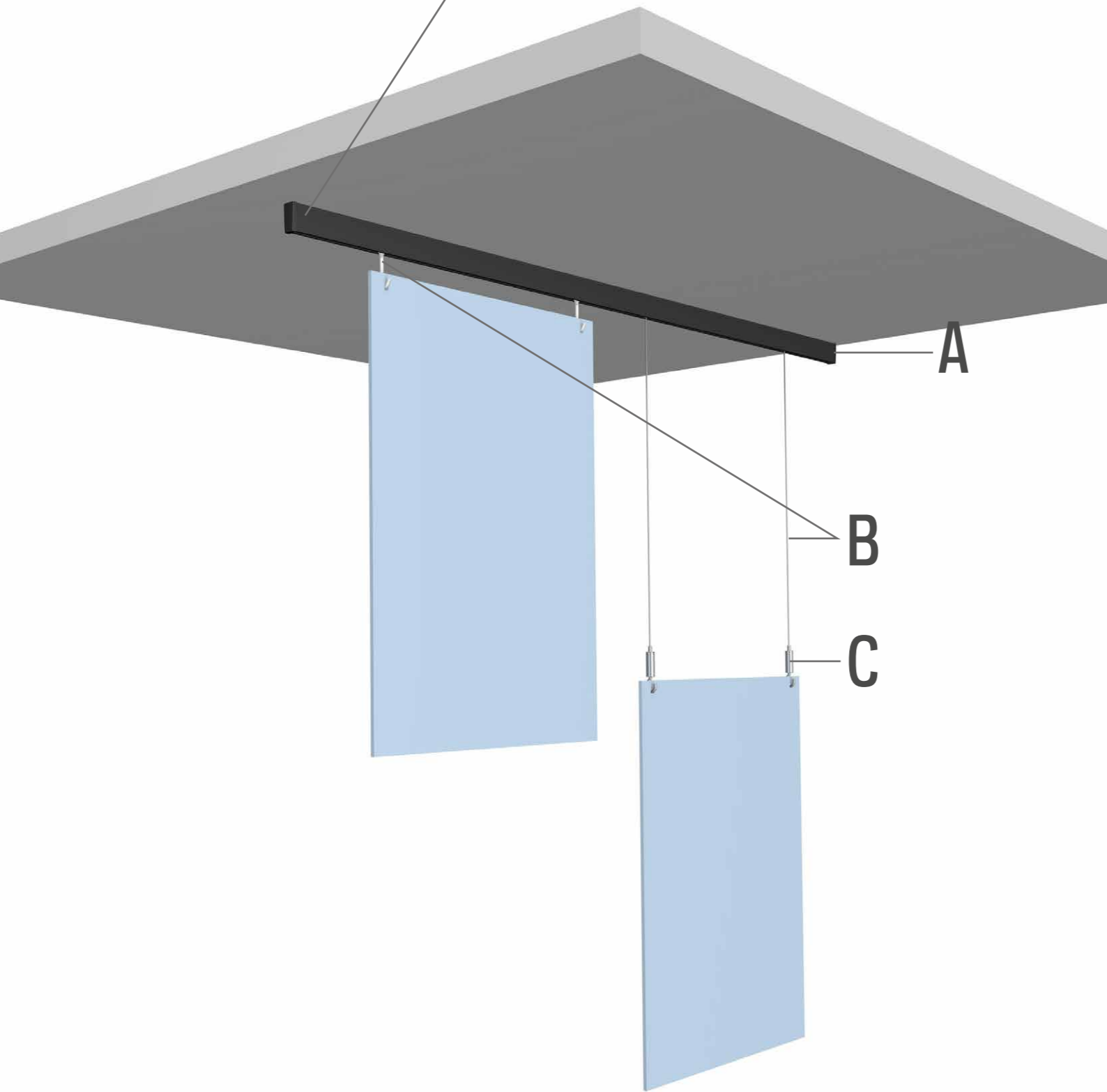
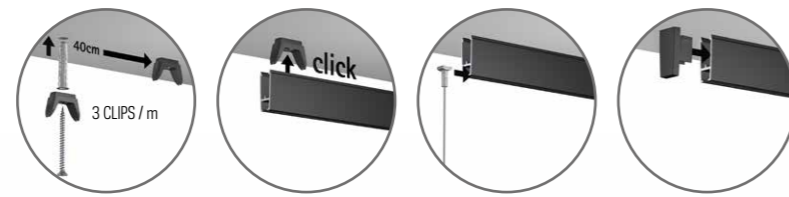


XPO RAIL

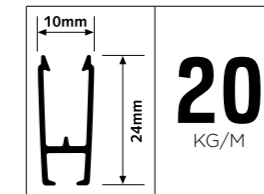


COMBINATION SHOWN:
A + B3
A + B2 + C3

POSSIBLE COMBINATIONS:
A + B1/B2 + C1/C2/C3/C4/C5/C6/C7
A + B3

XPO RAIL

A	
XPO RAIL 200 cm BLACK	XPO RAIL 200 cm WHITE PRIMER
05.15201	05.15200



A						
END CAP XPO RAIL BLACK	END CAP XPO RAIL WHITE	CLIP CLICK&CONNECT XPO RAIL	FISCHER DUOPOWER 5X25 5 mm	SCREW 3,5 X 40 mm	FASTENER KIT XPO RAIL WHITE 200 CM	FASTENER KIT XPO RAIL BLACK/ALU 200 CM
05.15030	05.15020	05.15010	9.4934	9.4945	5092	5093

B		
B1	B2	B3
STEELWIRE + SLIDER 1,2 mm 300 cm BLACK	STEELWIRE + SLIDER 1,2 mm 300 cm NICKEL	TWISTER HOOK
7807.200	7807.210	9.4510

C						
C1	C2	C3	C4	C5	C6	C7
STEELWIRE HOOK AUTO GRIP 1,2 mm ST01BL	STEELWIRE HOOK AUTO GRIP 1,2 mm ST01NI	STEELWIRE HOOK AUTO GRIP 1,2 mm ST02NI	STEELWIRE HOOK AUTO GRIP 1,2 mm ST03NI	STEELWIRE CLAMPHOOK AUTO GRIP 1,2 mm STC01NI	STEELWIRE HOOK AUTO GRIP 1,2mm STD01NI NICKEL	STEELWIRE HOOK AUTO GRIP 1,2mm STD01BL BLACK
7807.010	7807.020	7807.030	7807.040	7807.050	7807.080	7807.070

* CONTENT FASTENER KIT

			AANTAL 200 cm
	05.15010	CLIP XPO RAIL	6x
	9.4934	PLUG FISCHER 5 mm	6x
	9.4945	SCREW FOR PLUG FISCHER 5 mm	6x
	05.15020 / 05.15030	END CAP XPO RAIL WHITE / BLACK	2x
	2639	INSTRUCTION	1x



installation video